



**PROFESSIONAL 4-WHEEL
TRACTORS (G SERIES)
ADDENDUM TO THE
ATTACHMENTS OPERATORS
MANUAL**

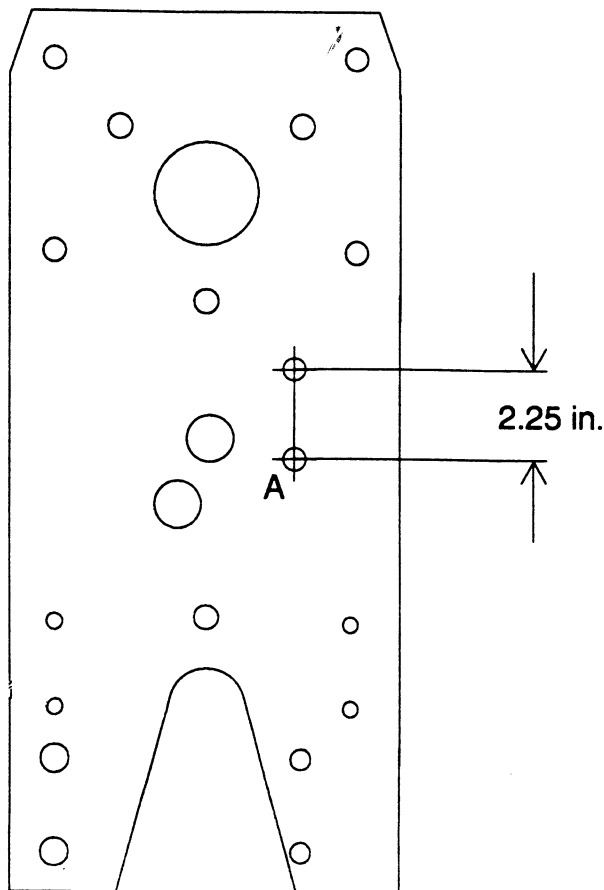
**FORM NO: 87843 (7-94)
87843**

**PART NO: 833003, 833006, 885004
885005, 885006, 885010,
885015, 887003, 887011**

**PRINTED IN USA
\$1.00**

Changes have been made on in the hydraulic lift system on the new Gravely 4-Wheel tractor. To accommodate these changes, you may need to make the following changes on your attachment.

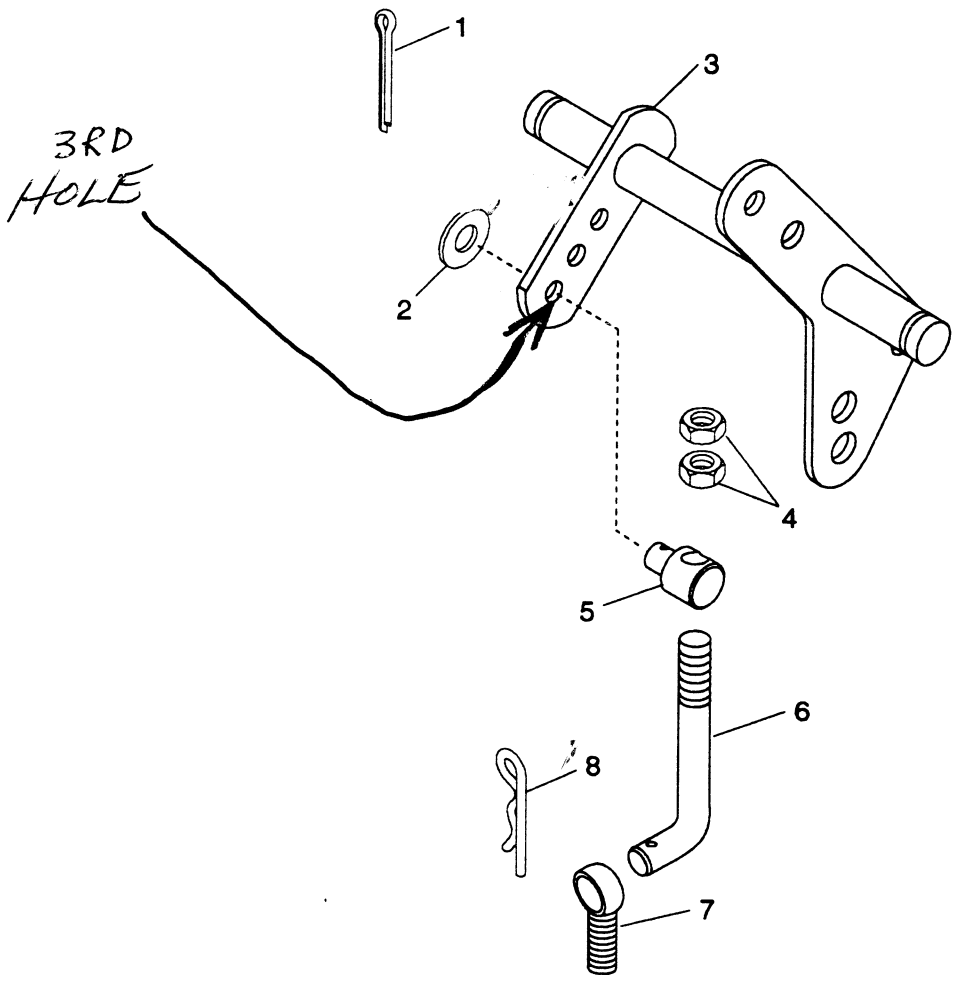
1. For a 40" or 50" center mount mower deck, you may have to drill a $17/32$ " dia. hole in the gear housing support. See figure 1 for a layout of the part and location of hole. If you need to drill a hole, you will also have to move the eyebolt to this hole. Also, the mower lift pivot will go into the third (last) hole in the lift arm. See figure 2.
2. For a 60" center mount mower deck, you will need to insert the lift link from the rear if the deck. Also, the mower lift pivot will go into the third (last) hole in the lift arm. See figure 3.
3. For any front mount attachment, you will need to be sure the hydraulic lift cylinder is bolted to the top hole (Hole A) in the lift arm weldment. The bolt must be moved again to the bottom hole (Hole B) when a center mount mower is attached. See figure 4.



If hole "A" is not in your 40" or 50" mower gear housing support, you will need to drill a ~~$17/32$~~ $1/2$ " dia hole here and put the eyebolt through the hole.

*DRILL A $1/2$ " HOLE
UNTIL THE EYE BOLT
GOES THROUGH IT.*

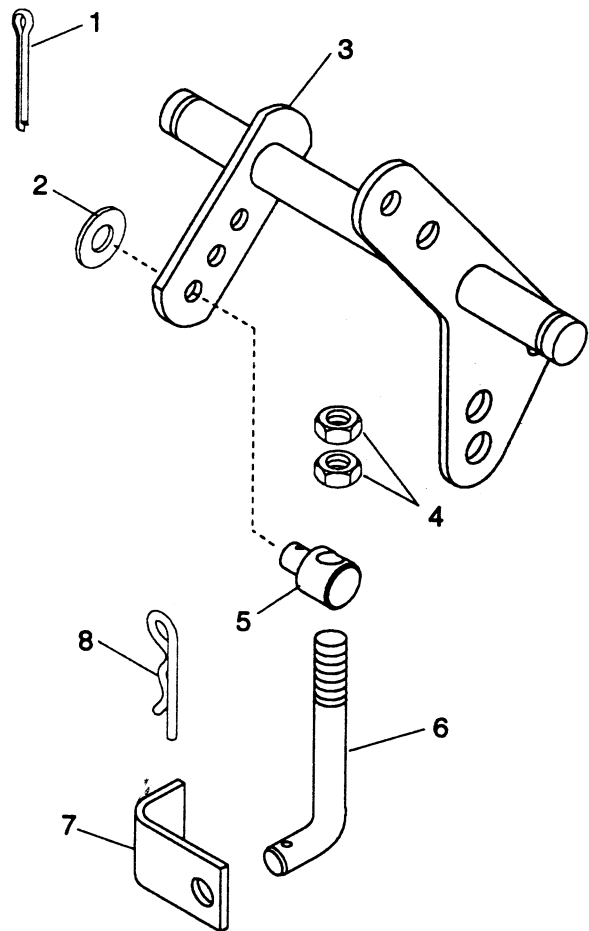
Figure 1



- 1. Cotter Pin
- 2. Washer
- 3. Lift Lever Weldment
- 4. Jam Nut

- 5. Mower Lift Pivot
- 6. Mower Lift Arm
- 7. Eye Bolt
- 8. Hair Pin

Figure 2



- | | | | |
|----|---------------------|----|------------------|
| 1. | Cotter Pin | 5. | Mower Lift Pivot |
| 2. | Washer | 6. | Mower Lift Arm |
| 3. | Lift Lever Weldment | 7. | Lift Bracket |
| 4. | Jam Nut | 8. | Hair Pin |

Figure 3

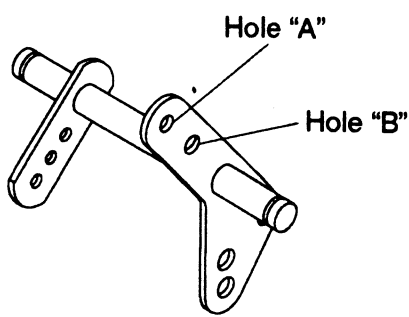


Figure 4